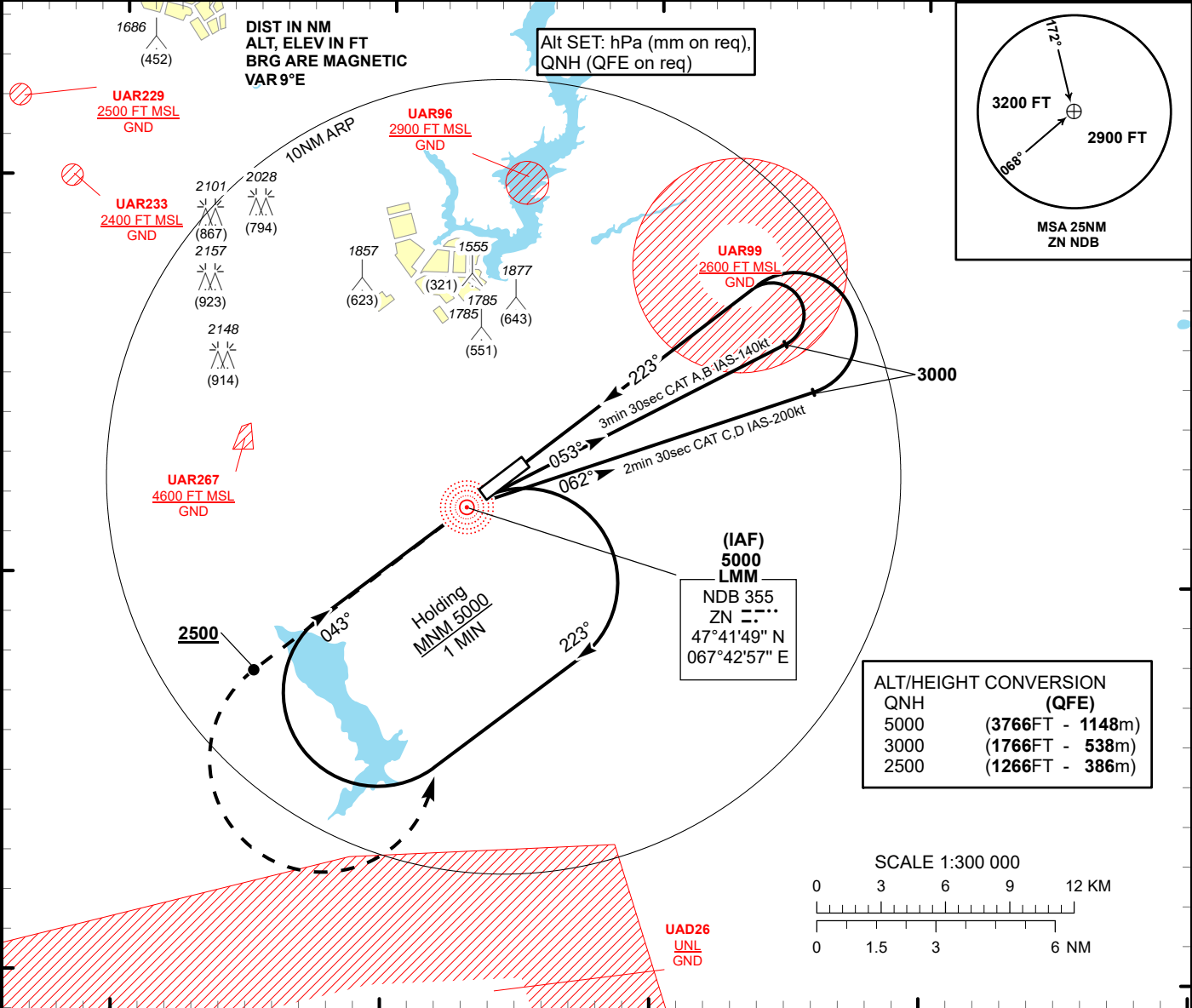


INSTRUMENT
APPROACH
CHART - ICAO

AERODROME ELEV **1251FT**
HEIGHTS RELATED TO
THR RWY 22 ELEV **1234 FT**

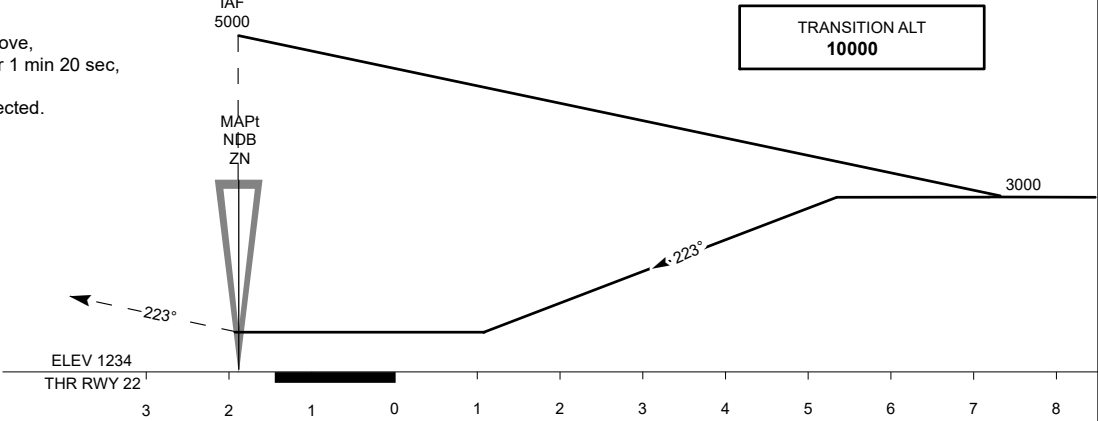
ZHEZKAZGAN TOWER 127.1
ZHEZKAZGAN ATIS (EN) 131.4
ZHEZKAZGAN ATIS (RU) 122.4

ZHEZKAZGAN
BC NDB
RWY 22



MISSED APPROACH

Climb on track 223° to 2500 or above,
after passing ZN maintain 223° for 1 min 20 sec,
then turn LEFT to ZN.
Climb initially to 3000, then as directed.
RADIO FAILURE:
In the case of RCF
climb to 5000 to ZN
and join to holding pattern.
Missed approach turn speed
limited to 250kt IAS maximum.



Aircraft Category		A	B	C	D
Straight-in Approach OCA/H	BC NDB	1640(400)	1640(400)	1640(400)	1640(400)
Aerodrome Operating Minima MDH ft x RVR (CMV)					
BC NDB					

ZHEZKAZGAN
BC NDB

AERONAUTICAL DATA TABULATION

NDB approach to RWY22 from NDB ZN	
Fix/point	Coordinates
LMM NDB ZN	47° 41' 48.7"N 067° 42' 56.9"E
THR RWY22	47° 42' 58.68"N 067° 45' 07.14"E